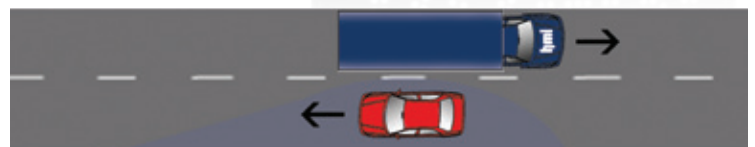


Curve Warning Sign

HMI Technologies' Curve Warning Sign has combined speed detecting radar technology with the immensely successful speed limit signs. As a power saving function, the sign only turns on with approaching traffic, displaying a curved arrow. If the approaching car is going over the pre-set limit, the 'SLOW DOWN' message lights up to warn the driver.

Features

- Built in Radar detects speeding cars and flashes the 'Slow Down' message to the driver
- Optional Solar Power means the sign can be completely self sustaining
- Full aluminium structure for increased lifespan in challenging weather situations
- Can be mounted cantilevered, on posts or overhead gantries
- Extra wide display angle of 30°



As the car enters the radar cone, the curve sign is able to detect it's speed. As seen below, the direct reaction to seeing the 'Slow Down' message flash in front of you is to put your foot on the brake

TECHNICAL SPECIFICATIONS	
Communication	Wireless Cellular
Power Supply	AC Mains, Solar or Street Light
Graphics	Standard NZ Legends & Symbols
Operating Temperatures	-20° to +65°
Display	Pre-configured LEDs
Optical Conformity	European Standard EN 12966
LED Brightness Control	16 Levels each of 256
Environmental Protection	IP55



LOWTRACTION Warning Sign

The Low Traction Warning Sign is an essential addition to perilous strips of road that are susceptible to slippery conditions. The sign only turns on with approaching traffic, displaying the skidding car image. If the approaching car is going over the pre-set limit, the 'SLOW DOWN' message lights up to warn the driver. The sign can also be equipped with a temperature sensor to activate the sign when the ambient temperature drops below a preset limit.

Features

- Built in Radar detects speeding cars and flashes the 'Slow Down' message to the driver
- Optional Solar Power means the sign can be completely self sustaining
- Full aluminium structure for increased lifespan in challenging weather situations
- Can be mounted cantilevered, on posts or overhead gantrys
- Optional temperature sensor
- Extra wide display angle of 30°



TECHNICAL SPECIFICATIONS

Communication	Wireless Cellular
Power Supply	AC Mains, Solar or Street Light
Graphics	Standard NZ Legends & Symbols
Operating Temperatures	-20° to +65°
Display	Pre-configured LEDs
Optical Conformity	European Standard EN 12966
LED Brightness Control	16 Levels each of 256
Environmental Protection	IP55

